

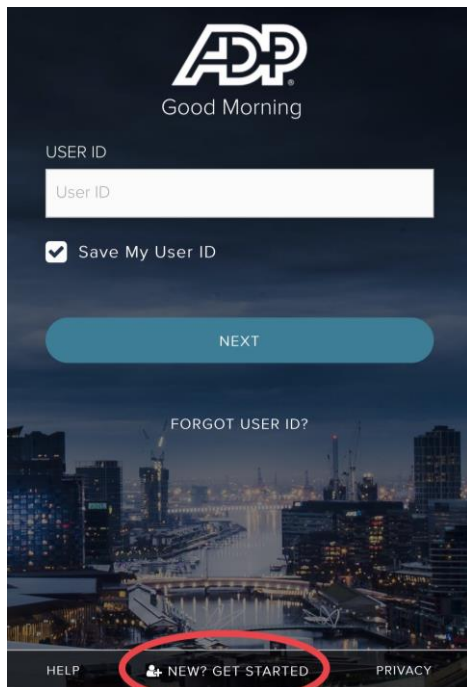
ADP Mobile Solutions Application

Step 1: Download the app

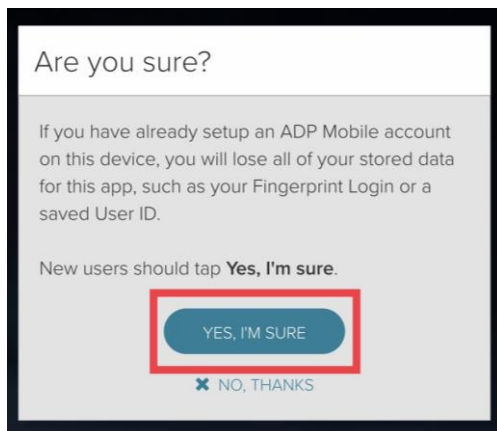
iPhone: App Store

Android: Play Store

Step 2: Click on “Get Started”

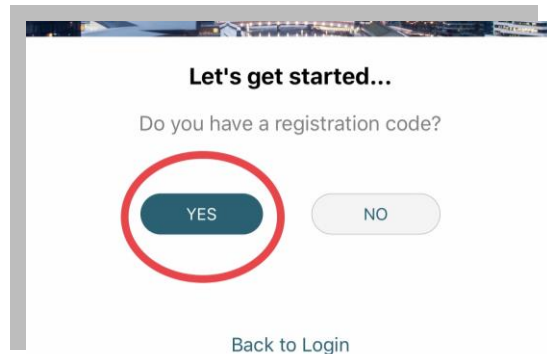


Step 3: Click on “Yes I’m sure”

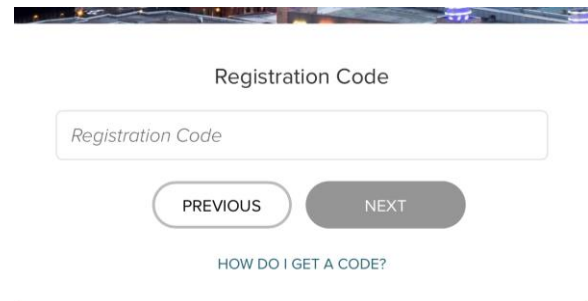


Step 4: Click on “Yes”

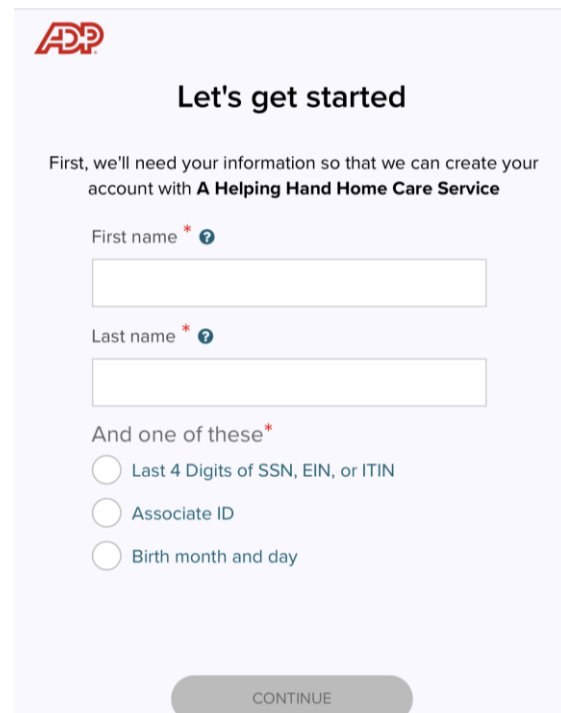
If you don't have a registration code please contact your HR representative.



Step 5: Type in your Registration code and click next



Step 6: Enter your First and Last name.



Step 7: Enter the last 4 of your SSN, then Press Continue.

A screenshot of a web form. At the top, there is a text input field. Below it, the label "Last name * ?" is followed by another text input field. Underneath, the text "And one of these*" is displayed. There are three radio button options: "Last 4 Digits of SSN, EIN, or ITIN" (which is selected), "Associate ID", and "Birth month and day". A small lock icon is next to the selected option's input field. Below the options is a link "WHY IS THIS REQUIRED?". At the bottom, there is a grey button labeled "CONTINUE".

Step 8: Enter an email and phone number. Then Press continue.

A screenshot of a web form titled "Help us protect your account" with the ADP logo. The form contains a section for "Primary Contact Information" with instructions: "Enter a frequently used email and phone number to receive a verification code to confirm your identity and/or recover your account login information, when needed." There are two input fields: "Email*" with a dropdown menu showing "Work" and "Phone*" with a dropdown menu showing "Personal, Mobile". Below the phone field is a country code dropdown showing "+1". At the bottom, there is a link "ADD BACKUP CONTACT INFORMATION" and a grey button labeled "CONTINUE".

Step 9: Create a User ID and Password, Re-type your Password for confirmation. Then Press Continue.

A screenshot of a web form with the ADP logo. The heading is "One more step," followed by a greyed-out input field. The text below says "Let's set up the login information for your account with A Helping Hand Home Care Service". There are three input fields: "User ID * ?", "Password (case sensitive) *", and "Confirm password (case sensitive) *". Below the password fields, there is a note: "Password must be 8 - 64 characters long and contain letters, numbers, and special characters." At the bottom, there is a grey button labeled "CREATE YOUR ACCOUNT".